

# NATIONAL BROKERS LIMITED

<http://nationalbrokersbd.com/>

**Tea Auctioneers since 1948**

## TEA MARKET REPORT – Sale 47 held on Monday 18<sup>th</sup> March, 2024

**CTC LEAF:** 31,143 packages of tea on offer met with as selective demand.

**BROKENS:** All types met with a little more demand but at much easier rates with quite heavy withdrawals. BLF teas met with only fair demand and were easier with a lot of withdrawals.

**FANNINGS:** All varieties met with a little less demand with prices easing further. There were also quite heavy withdrawals. BLF teas met with only fair demand and were easier with a lot of withdrawals.

**DUST:** 10,865 packages of tea on offer met with only some demand. A few good liquoring Dusts sold well.

Mediums were an easier market with heavy withdrawals. Plain and BLF Dusts again met with much less demand with huge withdrawals. Blenders lent fair support whilst Loose tea buyers were very selective.

**COMMENTS:** Offerings comprised of end of season quality which met with a selective demand. Both Blenders and Loose tea buyers showed a little more interest. As a result, withdrawals were a little less this week.

Dusts met with less demand at easier rates.

**Our Catalogue: (Sale 47) Avg : Tk 103.72 Sold 47.53% , (Sale 46) Avg : Tk 115.30 , Sold 45.30%**

### Quotations – This Week – (In Taka)

Brokens	This Week	Last Week	Fannings	This week	Last Week	Dust	This week	Last Week
Best	NQTA	NQTA	Best	NQTA	NQTA	PD	50-198	55-216
Good	NQTA	NQTA	Good	NQTA	NQTA	RD	60-211	60-226
Good Med	135-145	140-150	Good Med	140-145	145-150	D	61-208	75-258
Medium	110-120	120-130	Medium	110-120	120-130	CD	145-270	98-337
Plain	55-85	55-85	Plain	55-85	55-85	BLF	85	85
BLF	75-100	80-110	BLF	75-100	80-110			

Exchange Rates 11<sup>th</sup> March 2024 Sterling Pound 140.3819 Dollar: Tk. 109.5000

### Top Prices – This Week

Category – CTC	Garden	Grade	Package	Price	Buyer(s)
Brokens	* Marina/*Luskerpore	GBOP/BOP	20 /10	175/-	Kazi/AKT/MS
Fannings	* Amrail	PF	30	167/-	Meghna
Clonal Brokens	* Brindabon	GBOP(S)	10	228/-	Sanwara
Clonal Fannings	Karnafuli	OF	10	161/-	City
RD/PD (incl.Clone)	* Balisera	RD	10	211/-	TK
D (incl.Clone)	* Amrail	D	20	208/-	Bornali/Ispahani
CD (incl.Clone)	* Amrail	CD	10	270/-	AKT

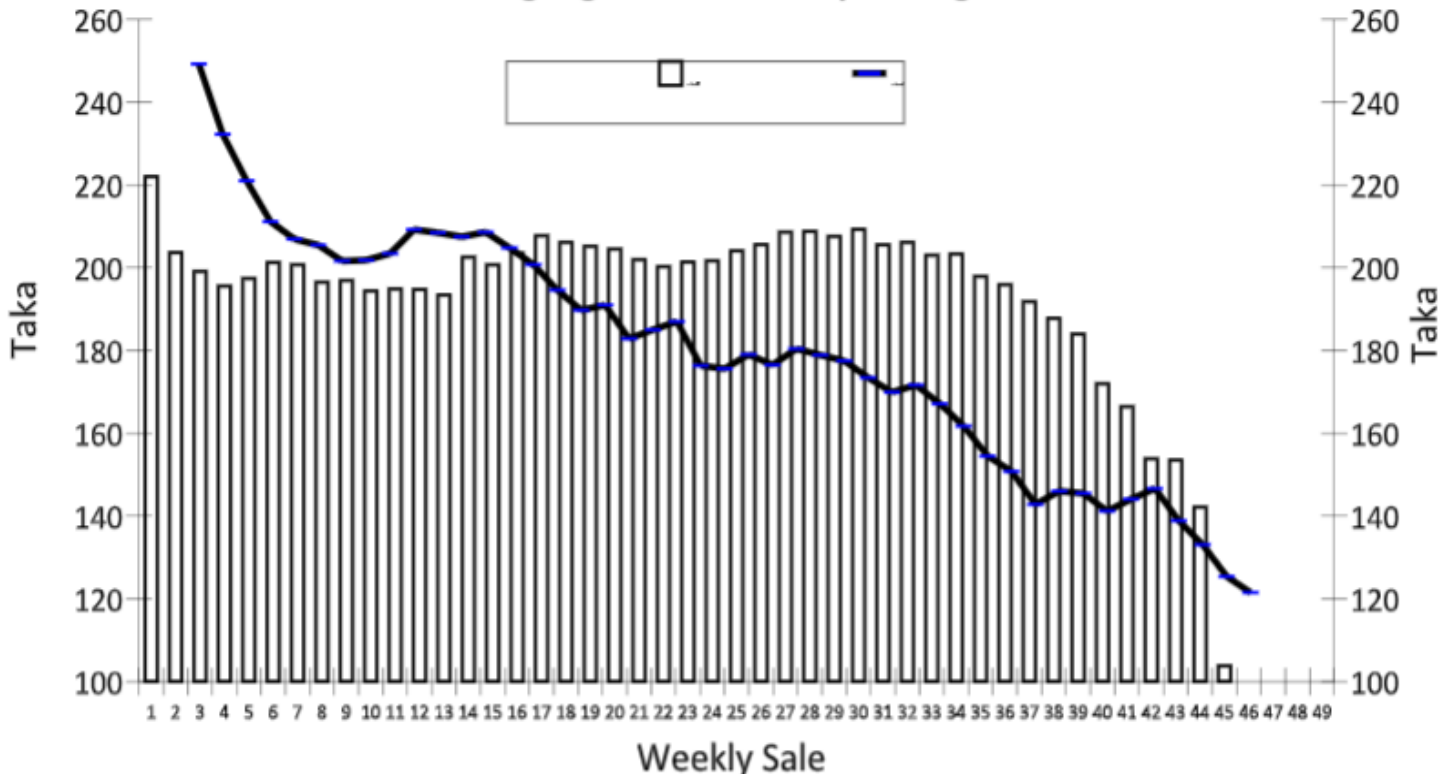
\* Above price(s) realised in our catalogue

### Offerings

Type	This Sale (Sale 47)		Next Sale (Sale 48)	
	Season 2023-24	Season 2022-23	Season 2023-24	Season 2022-23
Leaf	Packages 31,143 Qty/Kg 1,554,035.7	No Sale	Packages 21,615 Qty/Kg 1,078,588.5	No Sale
Dust	Packages 10,865 Qty/Kg 542,163.5	No Sale	Packages 5,599 Qty/Kg 279,390.1	No Sale
Total	Packages 42,008 Qty/Kg 2,096,199.2	No Sale	Packages 27,214 Qty/Kg 1,357,978.6	No Sale

Chittagong Auction Average - Sale 46  
(Season 2023/24): Tk 98.00 & (Season 2022/23) No Sale

### Chittagong Auction Weekly Average



Chittagong Auction Statistics - Sale: 46

Updated on: 18th March 2024

Category	Season 2022/23		Season 2023/24		Season 2022/23 (Up to Sale 45)			Season 2023/24			(+/-) Season 2022/23	
	Qty. (Kg)	Taka	Qty. (Kg)	Taka	Qty. (Kg)	(%)	Taka	Qty. (Kg)	(%)	Taka	Qty. (Kg)	Taka
CTC LEAF			1,039,371.5	95.16	68,592,652.2	77.5%	191.39	72,283,413.5	79.45%	170.24	3,690,761.3	-21.15
CTC DUST			256,846.7	109.58	18,121,355.3	22.5%	216.50	18,877,568.6	20.28%	194.97	756,213.3	-21.53
Sub-Total			1,296,218.2	98.02	86,714,013.5	99.9%	196.64	91,160,982.1	99.73%	175.35	4,446,968.6	-21.29
Orthodox			0.0	0.00	0.0	0.0%	0.00	499.0	0.00%	850.00	499.0	850.00
Total			1,296,218.2	98.02	86,714,013.5	99.9%	196.64	91,161,481.1	99.73%	175.35	4,447,467.6	-21.29
Green Tea	No Sale		0.0	0.00	36,493.5	0.0%	560.44	3,887.7	0.00%	749.37	-32,611.8	188.93
Oolong Tea			0.0	0.00	49.0	0.0%	1,636.73	7.0	0.00%	1,250.00	-42.0	-386.73
Yellow Tea			0.0	0.00	28.0	0.0%	1,552.68	20.5	0.00%	1,250.00	-7.5	-302.68
Total			1,296,218.2	98.02	86,750,590.0	99.9%	196.79	91,165,396.3	99.74%	175.38	4,414,806.3	-21.41
Other (±)			435.5	50.0	172,300.0	0.1%	181.13	217,200.9	0.26%	116.36	44,900.9	-64.77
G.Total			1,296,713.7	98.00	86,922,890.0	100.0%	196.76	91,382,597.2	100%	175.24	4,459,707.2	-21.52

Buyer Purchase Analysis

Buyer	Season 2022/23		Season 2023/24		Season 2022/23 (Up to Sale 45)			Season 2023/24			(+/-) Season 2022/23	
	Qty. (Kg)	Taka	Qty. (Kg)	Taka	Qty. (Kg)	(%)	Taka	Qty. (Kg)	(%)	Taka	Qty. (Kg)	Taka
Export			115,784.0	64.43	90,188.8	0.02%	134.10	598,873.7	0.27%	79.15	508,684.9	-54.95
Internal	No Sale		1,180,329.7	101.29	86,832,701.0	99.98%	196.83	90,783,723.5	99.73%	175.88	3,951,022.5	-20.95
Grand			1,296,713.7	98.00	86,922,890.0	100%	196.76	91,382,597.2	100%	175.24	4,459,707.4	-21.52

Crop of Major Tea Producing & Exporting Countries

Country	Month	For the Month				Up-to-Date			
		2022	2023	2024	(+/-) 2023	2022	2023	2024	(+/-) 2023
Banglade	January	0.51	0.36	0.18	-0.19	0.51	0.36	0.18	-0.19
Sri Lanka	June	20.1	22.9			133.2	134.4		
North Indi	June	119.3	109.7			347.1	344.0		
South Indi	June	23.9	28.2			119.6	113.7		
All India	June	143.2	137.9			466.7	457.7		
Kenya	May	57.9	57.9			227.9	225.5		

\* Source: Bangladesh Tea Board's Monthly Statistical Bulletin

Qty. = Million Kg

OTHER MARKETS

COONOOR SALE 11- 15<sup>TH</sup> MARCH, 2024

DEMAND: - Good demand continued to persist. MARKET: - The total CTC leaf teas sold this week was 89.91% (1039172.42kgs) of the total offering of 1155807.82Kgs. BEST:- Modest quantities of larger Broken grade were offered this week in this category and prices a southward trend. However, the medium Broken grade appreciated well in line with quality and competition with upward price movement of up to Rs 15/16. Smaller Broken at the lower end settled at steady prices, whilst the top end selectively sold easier. Fanning grade sold at irregular prices in line with quality. Local buyers and regional packeteers were fairly active along with good support from upcountry buyers. Major Blenders and Exporters were quiet in this segment. GOOD:- Resistance was witnessed in this segment this week with larger Broken settling at steady prices, Medium Broken selectively saw dearer prices however larger weight of teas sold at steady to easier prices. Smaller Broken saw a price decline at lower end whilst the top end sold steady to occasionally dearer. Fanning settled at steady prices. Major Blender operated only on a couple of Fanning invoices whilst Exporters were quiet. Up country, local & regional packeteers were less active in this segment this week. BETTER MEDIUM:- Larger Broken sold dearer by a Rupee, Medium Broken went up by Rs 1/5, smaller Broken by Rs 2/6 whilst the Fanning sold firm to dearer. Major Blenders were very selective and price sensitive and operated only up to Rs 100/-. Exporters were the mainstay in this segment and operated up to Rs 100/-, whilst the local & regional packeteers were selective. MEDIUM :- All sorts in this category sold firm to dearer whilst the cleaner, blacker Fanning grades appreciated by Rs 2 to 4. Exporters were the mainstay in this segment whilst the major Blenders were very choosy. Other sections of the buyers were fairly active. PLAINER:- All sorts appreciated by Rs 1/2 whilst the cleaner, blacker Fanning appreciated up to Rs 4. Exporters were active & continued to be the mainstay in this category, major Blenders were very choosy. Others were selective. The Major Blenders buying saw a steep decline compared to previous weeks and only 13.73% of the total CTC leaf sold.

CTC Leaf(USC/KG)	Best	Good	Better Medium	Medium	Plain
Larger Brokens	180-208	133-171	118-130	113-117	101-112
Medium Brokens	217-333	139-195	119-138	115-121	101-113
Smaller Brokens	193-255	139-192	121-133	113-119	99-112
Fannings	211-245	139-206	123-138	113-122	99-112

MOMBASA SALE 11- 11TH & 12TH MARCH, 2024

Fairly good general demand for the 292,479 packages (19,627,854.00 kilos) available in the market with 50.44% neglected.

CTC QUOTATIONS	BPI – USC	PF1 – USC	PD – USC	D1 – USC
Best	152 – 364	330 – 483	322 – 510	290 – 354
Good	140 – 331	329 – 348	320 – 343	274 – 308
Good Medium	130 – 329	186 – 340	149 – 336	145 – 312
Medium (KTDA)	084 – 251	110 – 302	120 – 315	170 – 307
Medium (Plantations)	145 – 183	120 – 248	128 – 230	120 – 231
Lower Medium	094 – 178	075 – 175	100 – 179	100 – 178
Plainer	070 – 110	050 – 125	052 – 128	058 – 118

KOLKATA/SILIGURI: SALE 11 has been dropped.